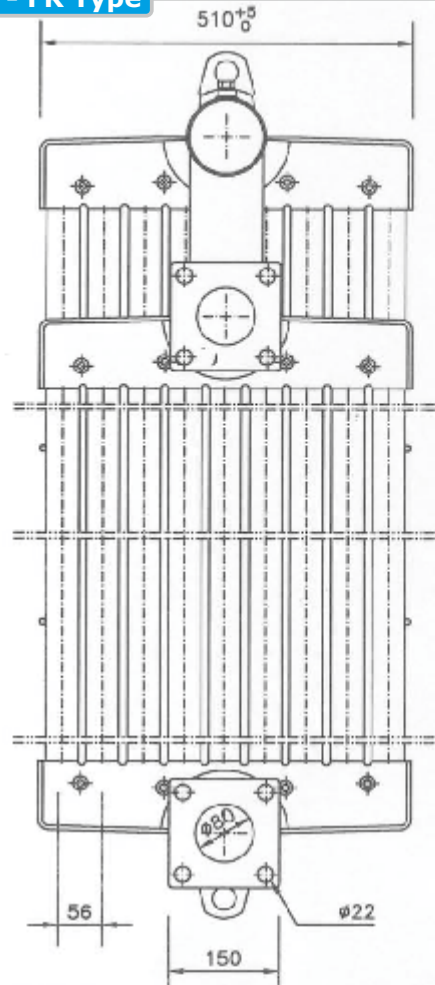
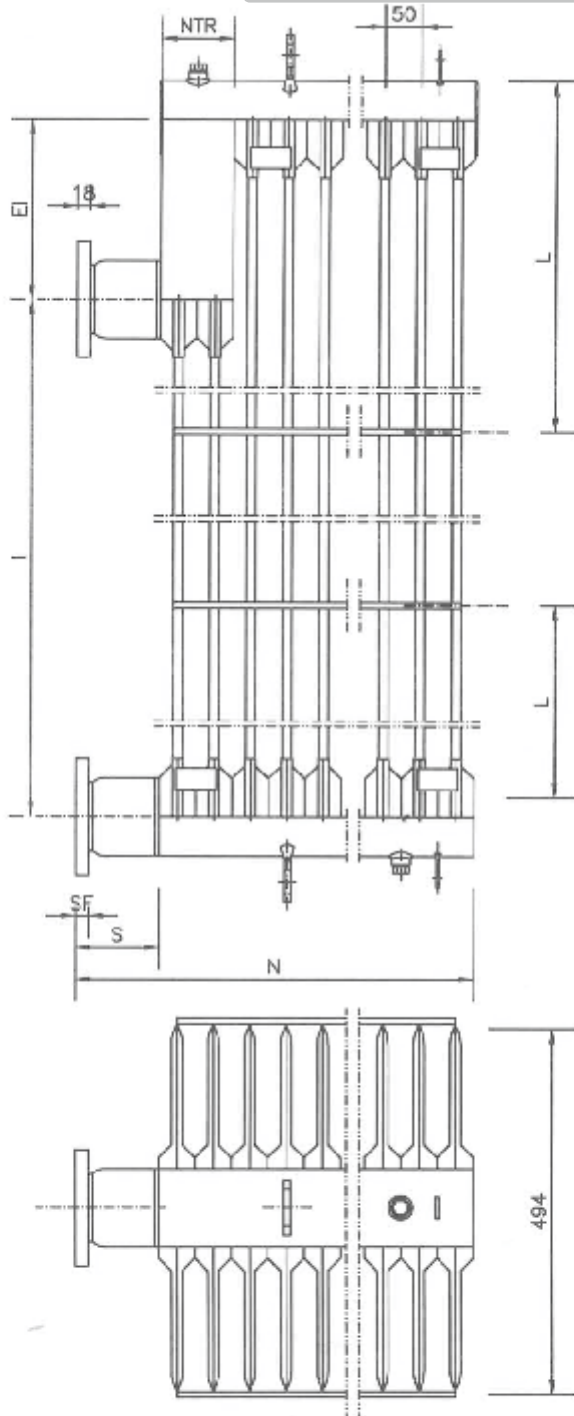


## Radiators enquiry forms

### INTERNAL ELEMENTS LOWERED - FR Type



#### FOR ORDERS

- NR= Numbers of RADIATORS = .....
- I = Height = mm .....
- Ne = Number of elements = .....
- S = Flange distance = mm .....
- N = Radiator length = mm  $S + Ne \times 50$
- EI = Height elevation = mm .....
- NTR = Number of lowered elements = 2
- L = Reinforcement distance = Our Standard (*dis. ELE-000*)

#### ENVIORNMENTAL CLASS CATEGORY:

- C3       C4       C5       GALVANIZED

Final colour = RAL .....

Total Thickness = ..... min. .... nom.