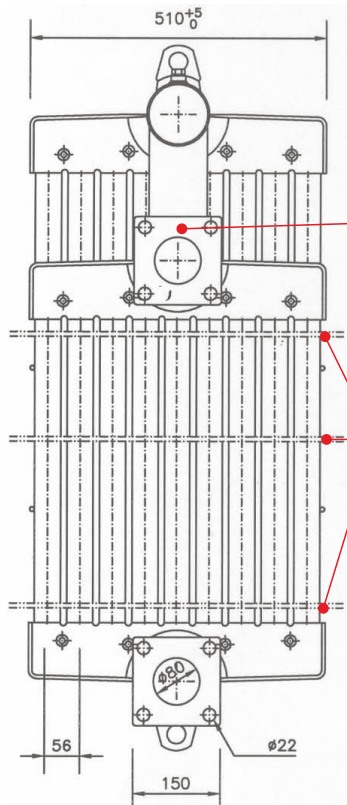


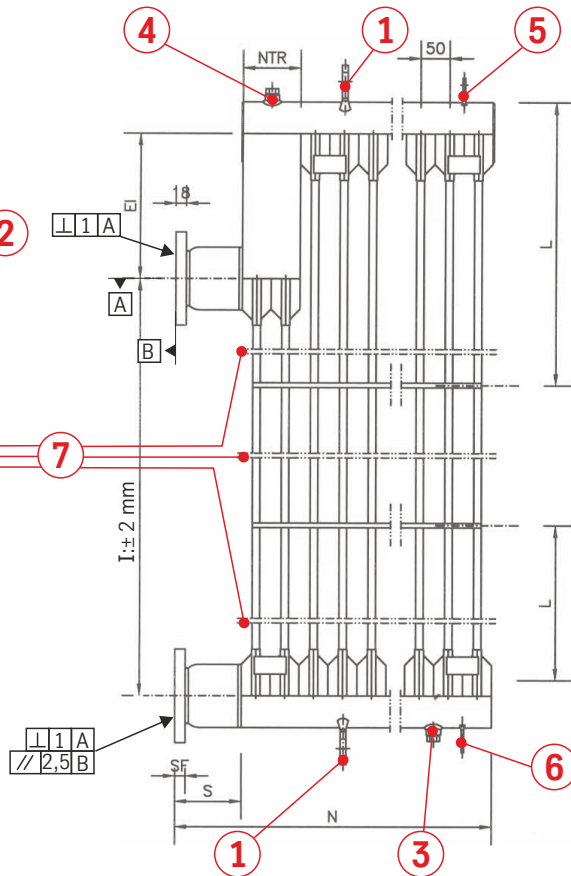
# RADIATORS ENQUIRY FORMS

## INTERNAL ELEMENTS LOWERED - FR Type

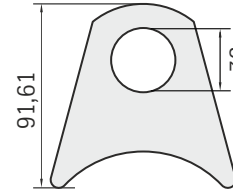
**RADIATOR FRONT VIEW**



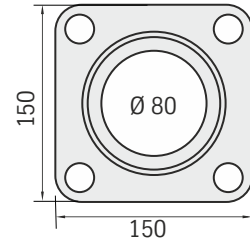
**RADIATOR LATERAL VIEW**



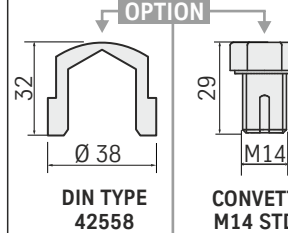
**1 LIFTING LUG**



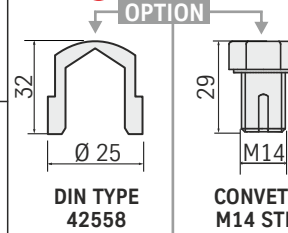
**2 FLANGE**



**3 DRAIN PLUG**

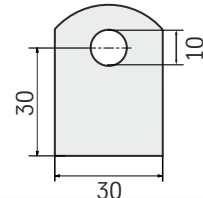


**4 VENT PLUG**



**5 EARTH PLATE**

**6 FIXING PLATE**



**RADIATOR COMPLIANT TO IEC 60076-22-2**

NR: Numbers of RADIATORS = .....

I: Height = mm .....

Ne: Number of elements = .....

S: Flange distance = mm .....

N: Radiator length = mm S+Ne x 50

EI: Height elevation = mm .....

NTR: Number of lowered elements = 2

**COUNTERFLANGE** with GASKET  or only RUBBER CAP

<b>1 LIFTING LUG</b>	Hardox® or Iron S275JR As per drawing (STD position)
<b>2 FLANGES</b>	Iron A105 As per drawing (Thickness 18 mm)
<b>3 DRAIN PLUG</b>	Iron AVP DIN Type or Steel class 8.8 Convett STD - As per your choice
<b>4 AIR / VENT PLUG</b>	Iron AVP DIN Type or Steel class 8.8 Convett STD - As per your choice
<b>5 EARTH PLATE</b>	Iron S235JR (Thickness 5 mm)
<b>6 FIXING PLATE</b>	Stainless Steel AISI 316L (Thickness 4 mm)
<b>7 REINFORCEMENT RODS</b>	As per standard (drawing ELE-000)

**PAINTING CYCLE COMPLIANT TO ISO 12944**

GALVANIZATION ACCORDING TO UNI ISO 1461 2009 YES  NO

ACCORDING TO C3  C4  C5

LOW DURAB.  MEDIUM DURAB.  HIGH DURAB.

1st COAT ..... 2nd COAT .....

3rd COAT ..... TOP COAT .....

FINAL COLOUR RAL .....

MIN. THICKNESS = ..... NOM. THICKNESS = .....



**CONVETT s.r.l.**

36050 Bressanvido (VI) - ITALY - Via del Lavoro, 7  
Ph: +39.0444.460144 - Fax: +39.0444.460110  
sales@convett.it - www.convett.it

