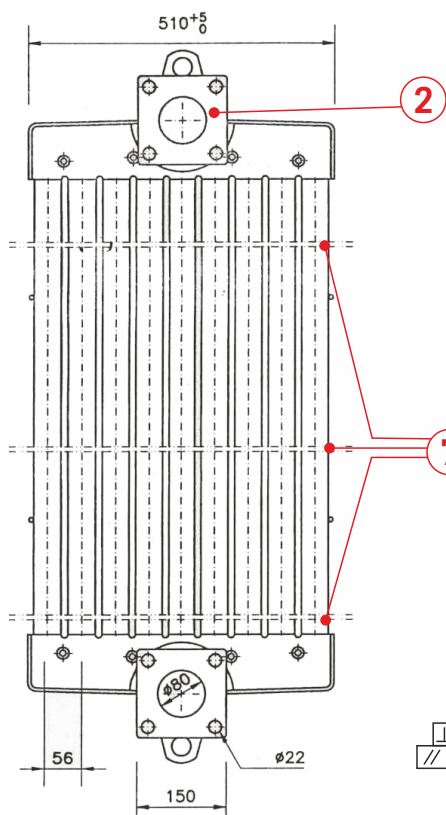


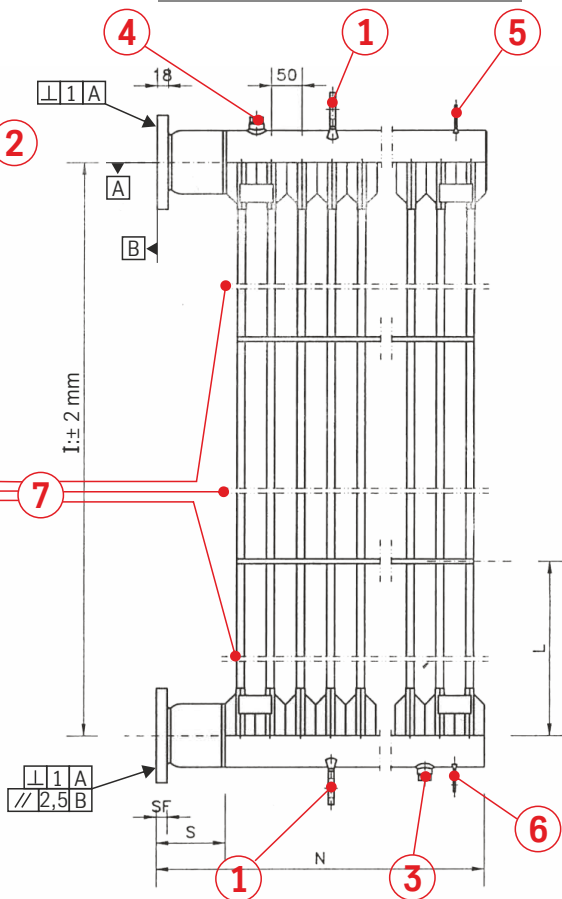
RADIATORS ENQUIRY FORMS

ALL ELEMENTS OF THE SAME HEIGHT - FG Type

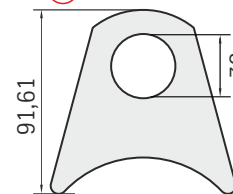
RADIATOR FRONT VIEW



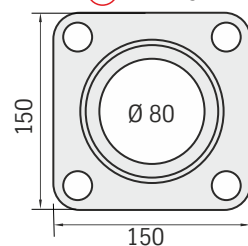
RADIATOR LATERAL VIEW



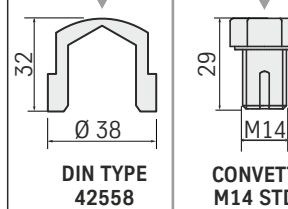
1 LIFTING LUG



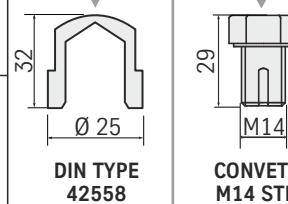
2 FLANGE



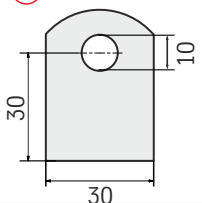
3 DRAIN PLUG
OPTION



4 VENT PLUG
OPTION



5 EARTH PLATE
6 FIXING PLATE



RADIATOR COMPLIANT TO IEC 60076-22-2

NR: Numbers of RADIATORS =

I: Height = mm

Ne: Number of elements =

S: Flange distance = mm

N: Radiator length = mm S+Ne x 50

COUNTERFLANGE with GASKET or only RUBBER CAP

1 LIFTING LUG	Hardox® or Iron S275JR As per drawing (STD position)
2 FLANGES	Iron A105 As per drawing (Thickness 18 mm)
3 DRAIN PLUG	Iron AVP DIN Type or Steel class 8.8 Convett STD - As per your choice
4 AIR / VENT PLUG	Iron AVP DIN Type or Steel class 8.8 Convett STD - As per your choice
5 EARTH PLATE	Iron S235JR (Thickness 5 mm)
6 FIXING PLATE	Stainless Steel AISI 316L (Thickness 4 mm)
7 REINFORCEMENT RODS	As per standard (drawing ELE-000)

PAINTING CYCLE COMPLIANT TO ISO 12944

GALVANIZATION ACCORDING TO UNI ISO 1461 2009 YES NO

ACCORDING TO C3 C4 C5

LOW DURAB. MEDIUM DURAB. HIGH DURAB.

1st COAT 2nd COAT

3rd COAT TOP COAT

FINAL COLOUR RAL

MIN. THICKNESS = NOM. THICKNESS =



CONVETT s.r.l.

36050 Bressanvido (VI) - ITALY - Via del Lavoro, 7
Ph: +39.0444.460144 - Fax: +39.0444.460110
sales@convett.it - www.convett.it

